

The background features a complex network of thin, dark grey lines connecting various colored nodes (dots) in shades of teal, orange, purple, and black. A faint, light green outline of a globe is visible behind the network. The overall aesthetic is modern and interconnected.

Local Emergency Management Plan Annexes

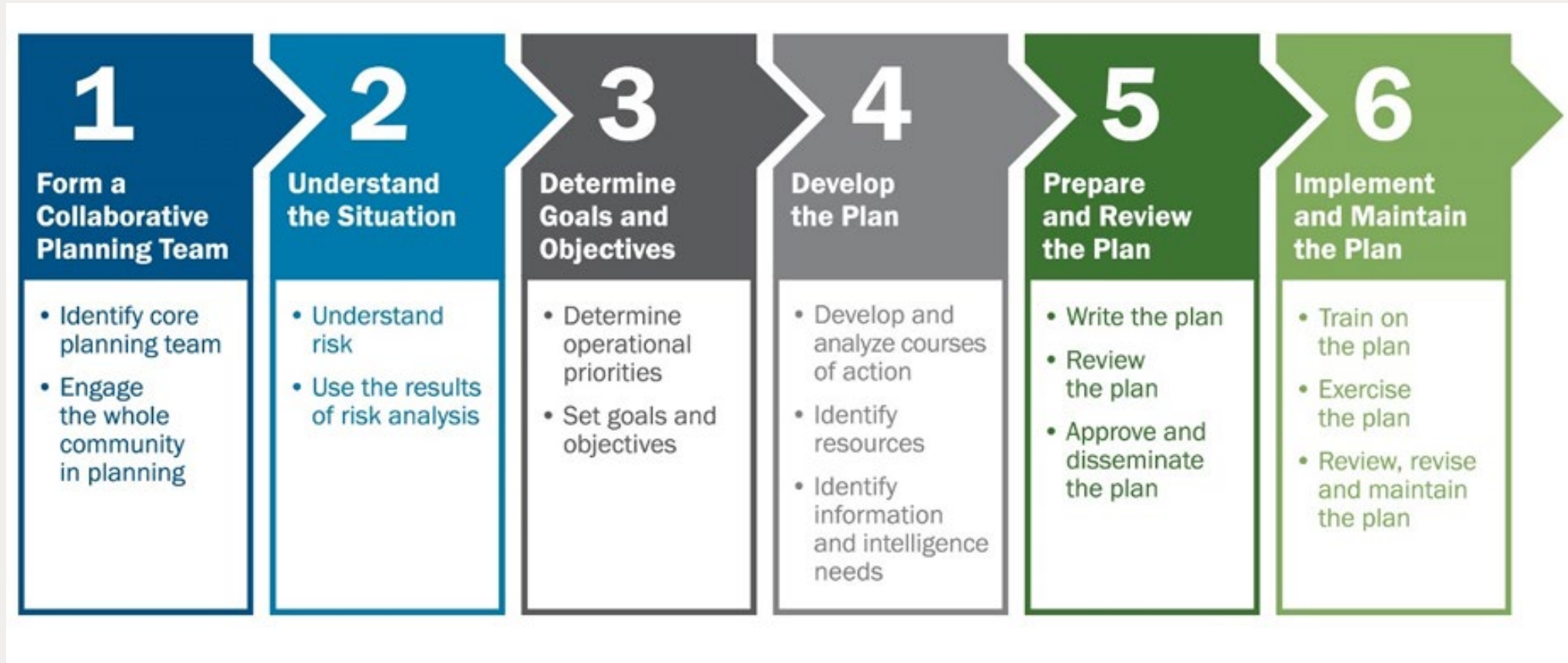
Why do we create annexes:

- Build resilient communities
- Identify organizations and individuals that are responsible for carrying out specific tasks during an emergency
- Establish lines of authority and organizational relationships during an emergency
- Create templates for the dissemination of public information
- Establishes expectations for actions during an emergency
- Build equity and integration into the planning process

EOP Annex Types:

- Functional Annexes
- Specific Threats and Hazards
 - Natural Hazards
 - Human Caused
 - Technological
 - Other

Steps in the Planning Process



[*Developing and Maintaining Emergency Operations Plans, September 2021](#)

VEM offers templates and forms for the following events:

- Continuity of Operations Plan Template
- Debris Management Template
- Hot Weather Preparedness Guidance
- Large Event Planning Annex
- Spontaneous Volunteer Management Annex
- Flood Annex Model from TRORC
- Ice Storm Annex Model
- Sheltering and Care Annex Model Springfield